

Slim Fiber Optic Splice Trays

Description

Wirewerks offers splice trays for both wall mount and rack mount patch panels. The trays are designed to provide maximum physical protection for fusion splicing, and they can be used with both loose tube and tight-buffered cable design. Our slim fiber optic splice trays are engineered to optimize splice protection, and control bend radius of loose tube and tight buffer cables. They feature crimpable tabs and multiple tie wrap entries to organize and secure cables. The slim base is fabricated with an aluminum metal sheet, and covered with UL 94 V-0 clear thermoplastic. These splice trays are made to fit in Wirewerks fiber optic rack mount and wall mount patch panels. We also offer a stackable plastic splice tray with unique and flexible splice and storage system. It is designed to hold up to 12 fibers and can be mounted into most fiber optic panels using standard mounting screws. Each plastic tray is supplied with a cover to protect the splices and prevent them from becoming damaged or being misplaced.

Features and Benefits

Base and cover close with interlocking mechanism

Slimline, stackable design allows higher splice density (plastic tray)

Multiple tie wraps entries and tabs to control bend radius and secure cables

Slim design and clear cover to easily inspect management flaws (metal trays)

Installation hardware and instruction manual included

Applications

Data center

Equipment room

Telecommunications room

Consolidation point

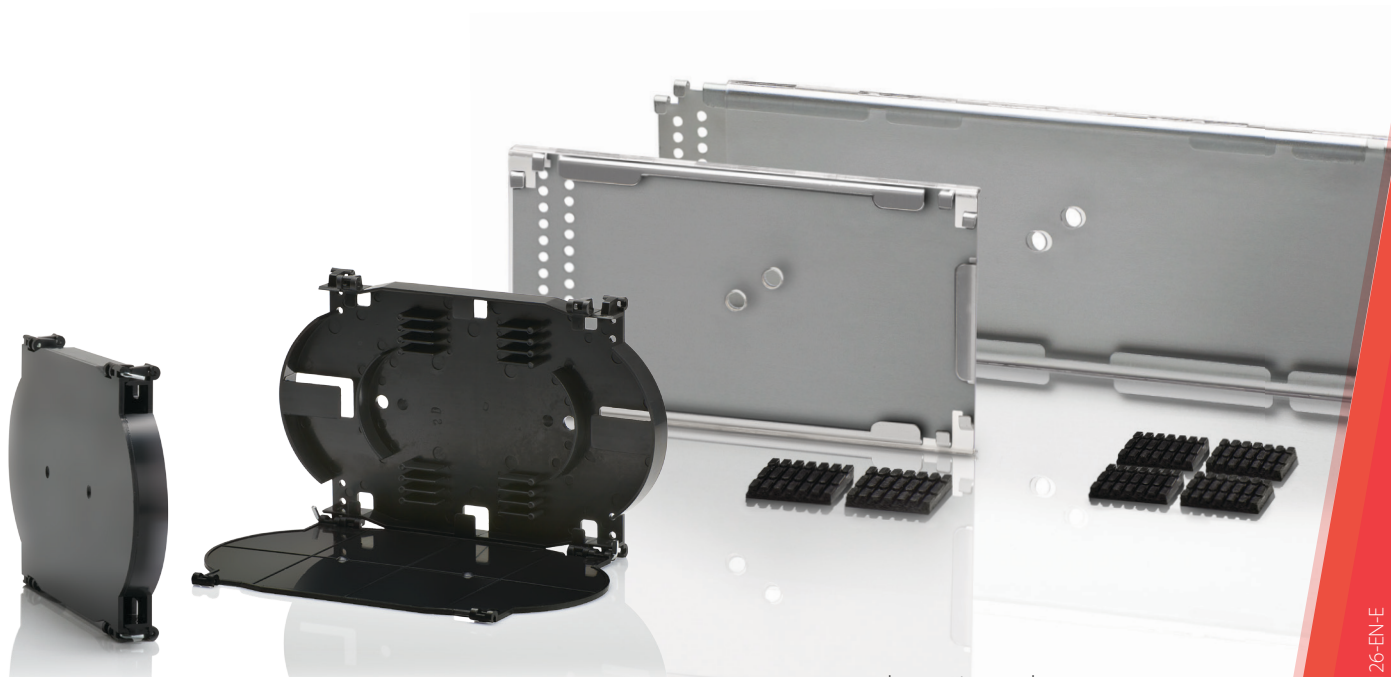
Certification and Compliance

UL 94

Tests for Flammability of Plastic Material for Parts in Devices and Appliances.

RoHS

Directive on Restriction of Hazardous Substances.





Ordering Information

| Description | Part Number |
|--------------------------------------------------------------|-------------|
| Slim fiber optic splice tray, up to 12 fibers (short length) | SPL-MSPL6 |
| Slim fiber optic splice tray, up to 12 fibers (long length) | SPL-MSPL12 |
| Slim fiber optic splice tray, up to 24 fibers (long length) | SPL-MSPL24 |
| Stackable black plastic splice tray, up to 12 fibers | SPL-WS12A |

Packaging

| Description |
|---------------------------------|
| Clear poly bag, 1 unit per bag. |

Inclusion

| Description |
|---------------------------------------------------|
| Instruction manual, self-adhesive splice holders. |

Physical Characteristics

| Parameter | | Value |
|--------------|----------------------|-------------------------------------------------------------------------------------------------------------------------------------------------------------|
| Metal trays | Fiber count capacity | 12 fibers maximum for SPL-MSPL6 12 fibers maximum for SPL-MSPL12 24 fibers maximum for SPL-MSPL24 |
| | Cover material | High impact UL 94 V-0 thermoplastic |
| | Base material | Aluminum sheet metal |
| | Base finish | Metallic grey |
| | Overall dimensions | 200.7 mm (7.9 in) x 101.6 mm (4 in) x 8.1 mm (0.32 in) for SPL-MSPL6 304.8 mm (12 in) x 101.6 mm (4 in) x 8.1 mm (0.32 in) for SPL-MSPL12 and SPL-MSPL24 |
| Plastic tray | Fiber count capacity | 12 fibers maximum for SPL-WS12A |
| | Plastic material | High impact UL 94 V-0 ABS thermoplastic, black |
| | Overall dimensions | 180 mm (7.08in) x 130 mm (5.11 in) x 15 mm (0.59 in) for SPL-WS12A |